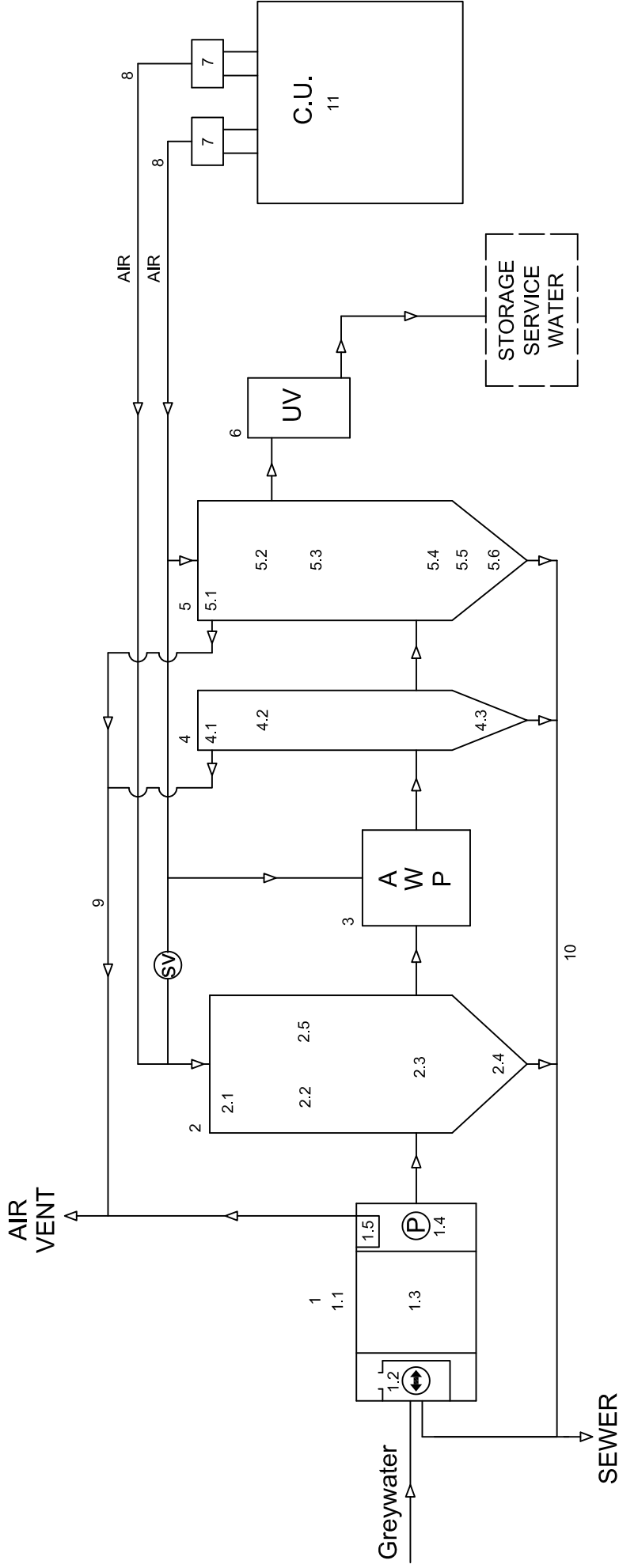


# GWTS-500 SCHEMATIC DIAGRAM



Aqua2use GWTS-500 Equipment List - see schematic diagram

1	Aqua2use GWDD	4.3	Purge cone + Air Water Lift
1.1	A2U GWDD Tank	5	Aqua2use Biochamber
1.2	Diverter basket with 3-way valve and overflow	5.1	Conical Tank
1.3	Matala progressive filter media	5.2	Fixed skimmer
1.4	Submersible pump	5.3	Matala progressive filter media
1.5	EPC-Electronic pump control + float switches	5.4	Aeration base
2	Buffer and active sludge process tank	5.5	Rotational Air Spitter
2.1	Conical Tank	5.6	Purge cone + Air Water Lift
2.2	Travelling Skimmer	6	UV Disinfection
2.3	Aeration base	7	Hakko 25 Membrane blowers - 2 pcs
2.4	Purge cone + Air Water Lift	8	Aeration system
2.5	Level controls	8.1	Aeration ducts and multiple fittings
3	Air Water Dosing Pump	9	Air venting duct + fittings
4	Sedimentation Tank	10	Drainage and overflow duct + fittings
4.1	Conical Tank	11	Control Unit with PCB electricals, solenoids, pressure controls etc ...
4.2	Particle separator		